

TILA TEQUILA'S KRISTY MORGAN NUDE

PLAYBOY

ENTERTAINMENT

www.playboy.com • OCTOBER 2008

20^Q

KEVIN
CONNOLLY
WITHOUT THE
ENTOURAGE

COLLEGE GIRLS

NUDE

THE
BIG

10

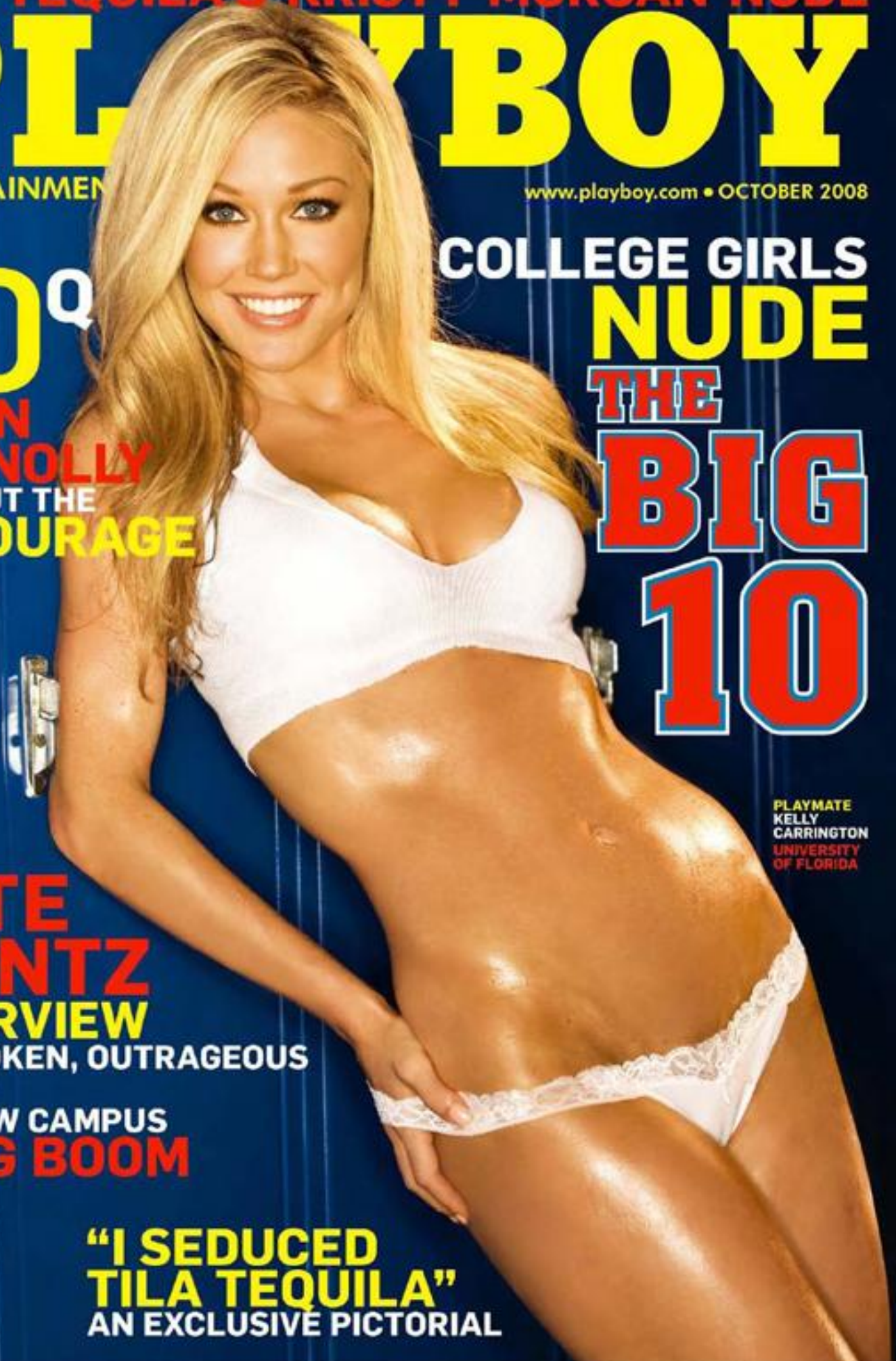
PLAYMATE
KELLY
CARRINGTON
UNIVERSITY
OF FLORIDA

PETE
WENTZ
INTERVIEW

OUTSPOKEN, OUTRAGEOUS

THE NEW CAMPUS
DRUG BOOM

"I SEDUCED
TILA TEQUILA"
AN EXCLUSIVE PICTORIAL



Let George Do It

THERE ARE NOW 17 hojillion iPod-dock stereo systems on the market. This is the one to get. It's from Chestnut Hill, so impeccable sound is a given. But the George system (\$500, chillsound.com) is far more than a set of speakers. Its primary control panel is a remote (the middle piece is removable) that gives you total iPod mastery (not just back, forward, play and pause) wherever you roam. That the remote doubles as an alarm clock is icing on the cake. Miles Davis in the morning will change your whole day.



Shoot 'Em Up

OVER THE PAST few years a new category of cameras has emerged on the market. You can call them souped-up point-and-shoots or stripped-down SLRs, but at the end of the day classification is superfluous—the point is they offer a unique blend of features, convenience and price. Take Olympus's 10-megapixel SP-565 UZ (\$400, olympus.com), which has a fixed lens but all the manual control of an SLR, plus a 20X optical zoom. Most surprising of all, when its lens is retracted, it will fit in your pocket without making you look like Quasimodo.

Desktop Hardware

ONCE IN A while you find something you didn't know you wanted all your life until you learned it existed. So it was when we stumbled on Dale Mathis's Executive Desk (\$20,000, theartofdalemathis.com), which marries the gears and rotors of a 19th century factory with Dali-esque 20th century baroque surrealism to give you a space on which to do your 21st century business. Inspired by hot rods, cranes, Edison and Freud, Mathis, a self-taught Las Vegas-based sculptor, hand makes all his pieces, sometimes hand carving individual gears. And yes, when you turn it on, it all moves.

